



SOCIAL HOUSING FUNCTIONAL ANALYSIS

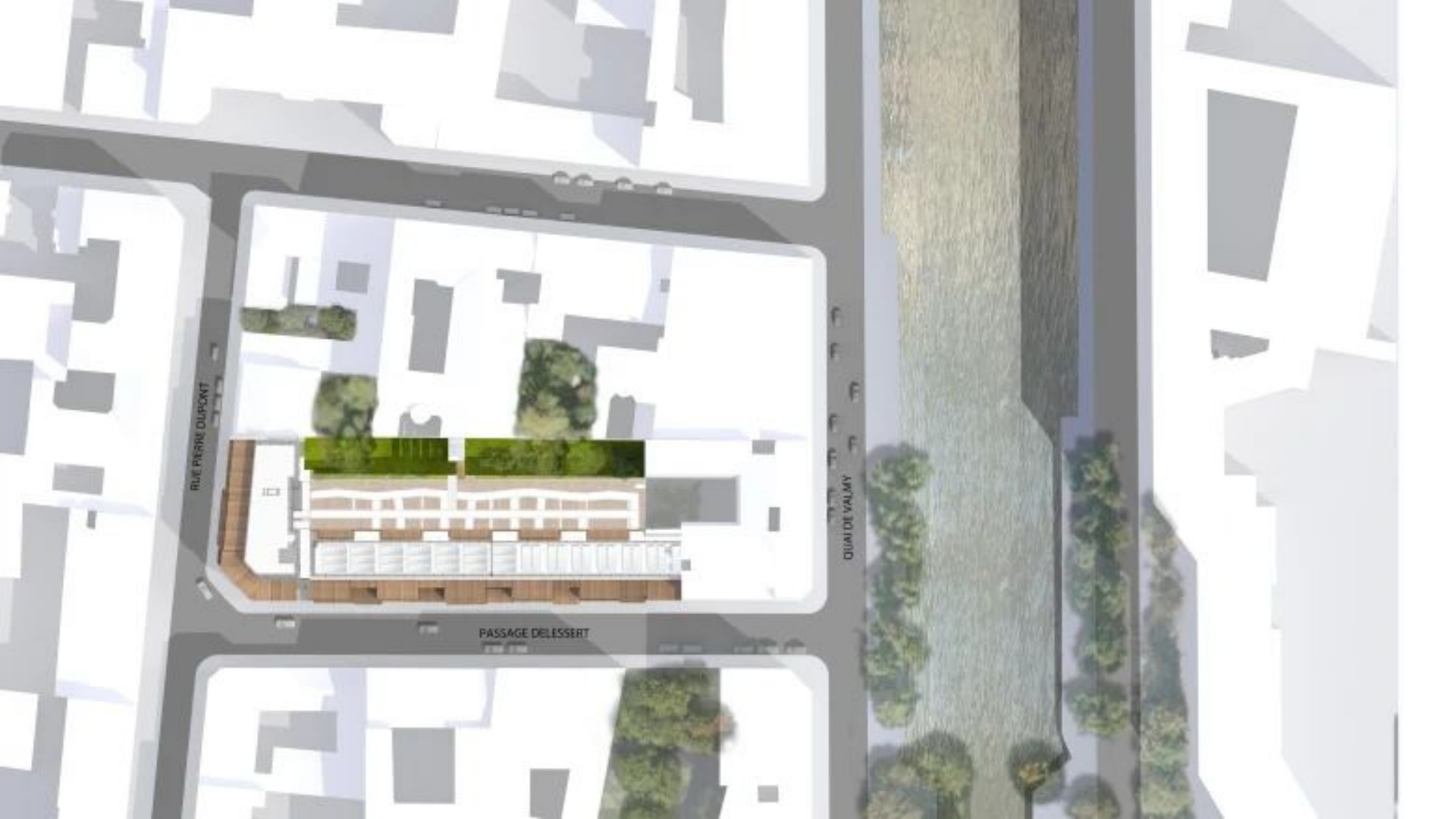
Group 7

Ivana KÚSKOVÁ
Antonio LUCIANO
Elise MATHON

69 UNITS OF SOCIAL HOUSING AND A GYMNASIUM IN PARIS / FRANCE

VINCENT PARREIRA - AAVP ARCHITECTURE
Project Year : 2016



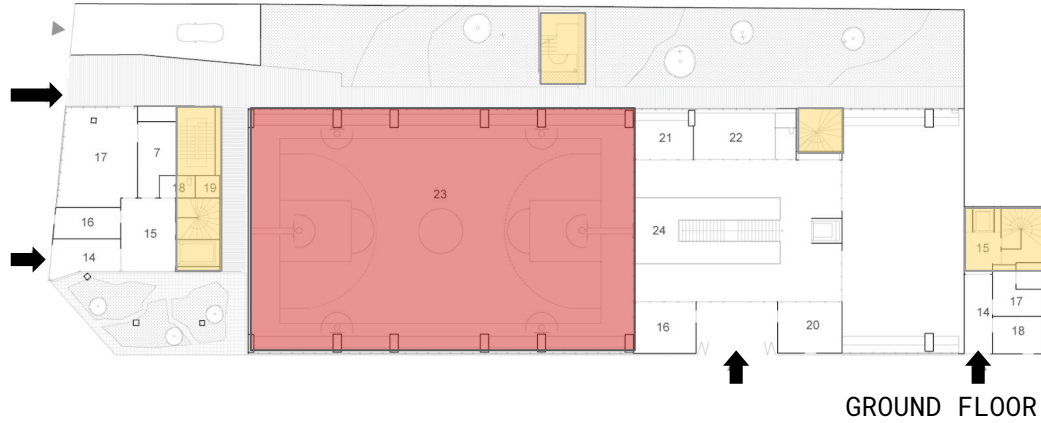


RUE PIERRE DUPONT

QUAI DE VALMY

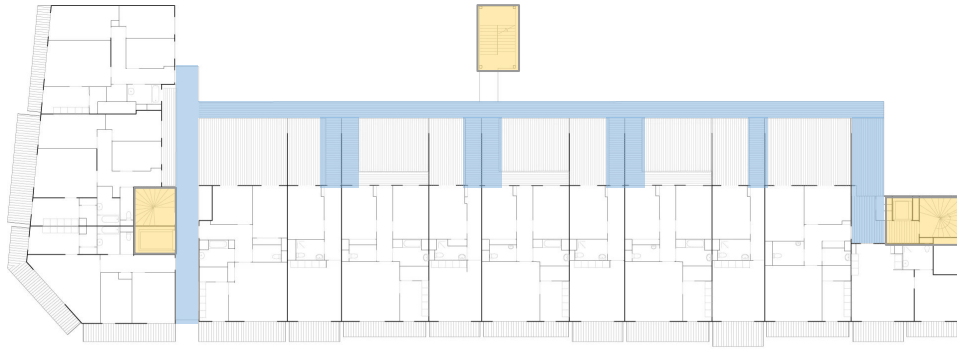
PASSAGE DELESSERT

ENTRANCES AND COMMON SPACES

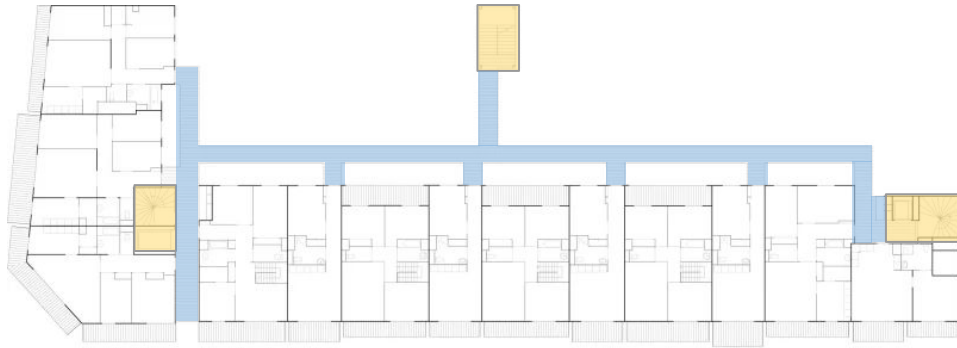


- ➔ Entrances
- Gymnasium
- Vertical circulations (stairs and lifts)
- Horizontal distribution

DISTRIBUTION



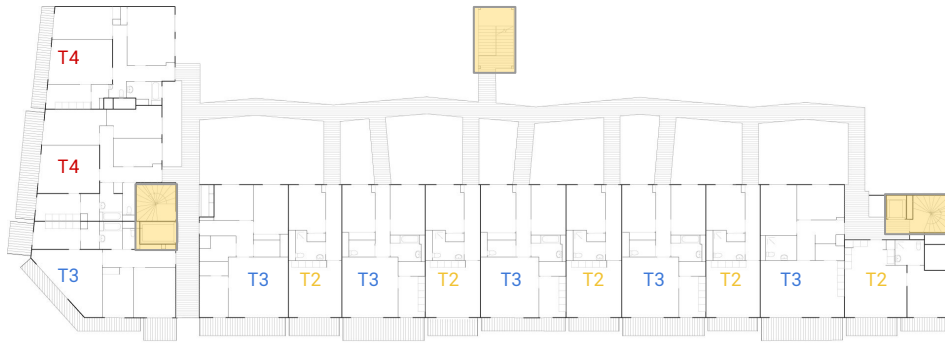
FIRST STOREY



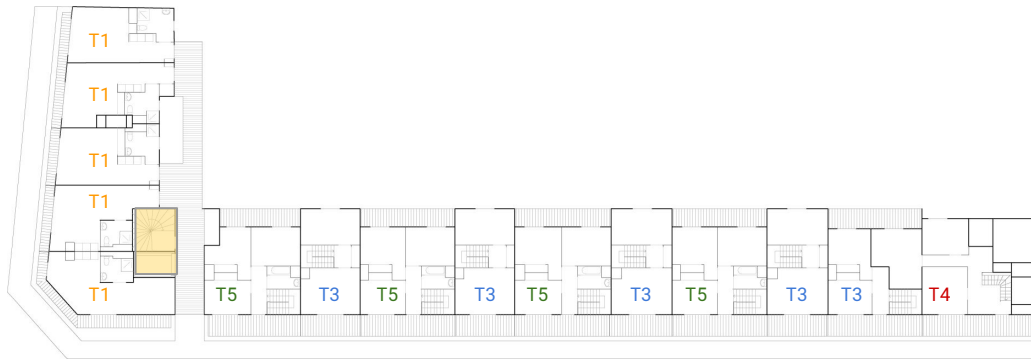
FOURTH STOREY



FLAT - MIX



SECOND STOREY



FIFTH STOREY



PRÁTER STREET 30-32 BUDAPEST

✂ PLANT-ATELIER PETER KIS

📄 1218 m²

📅 2007



STREET VIEW

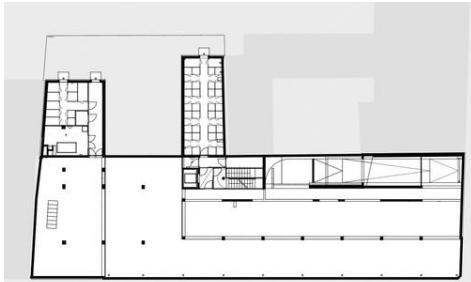


ENTRANCES AND COMMON SPACES



GROUND floor

- Common spaces (shops, services)
- Vertical circulations
- Horizontal distribution
- Entrances



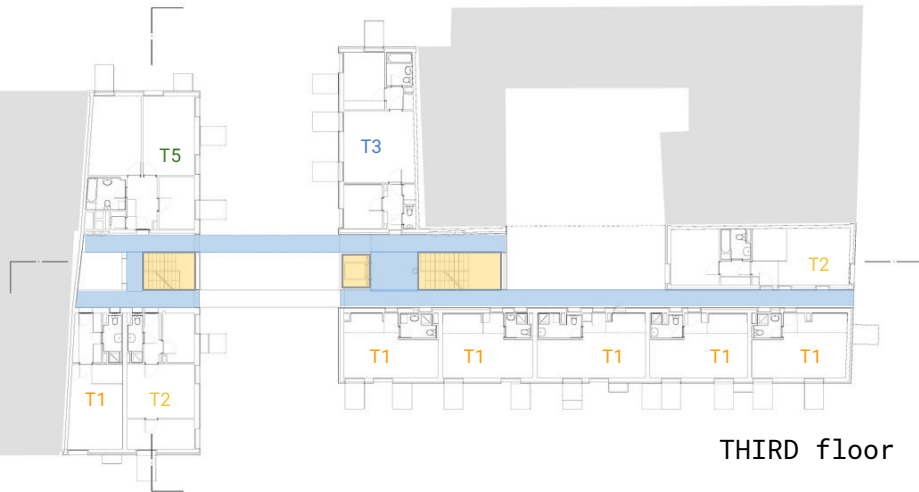
UNDERGROUND floor



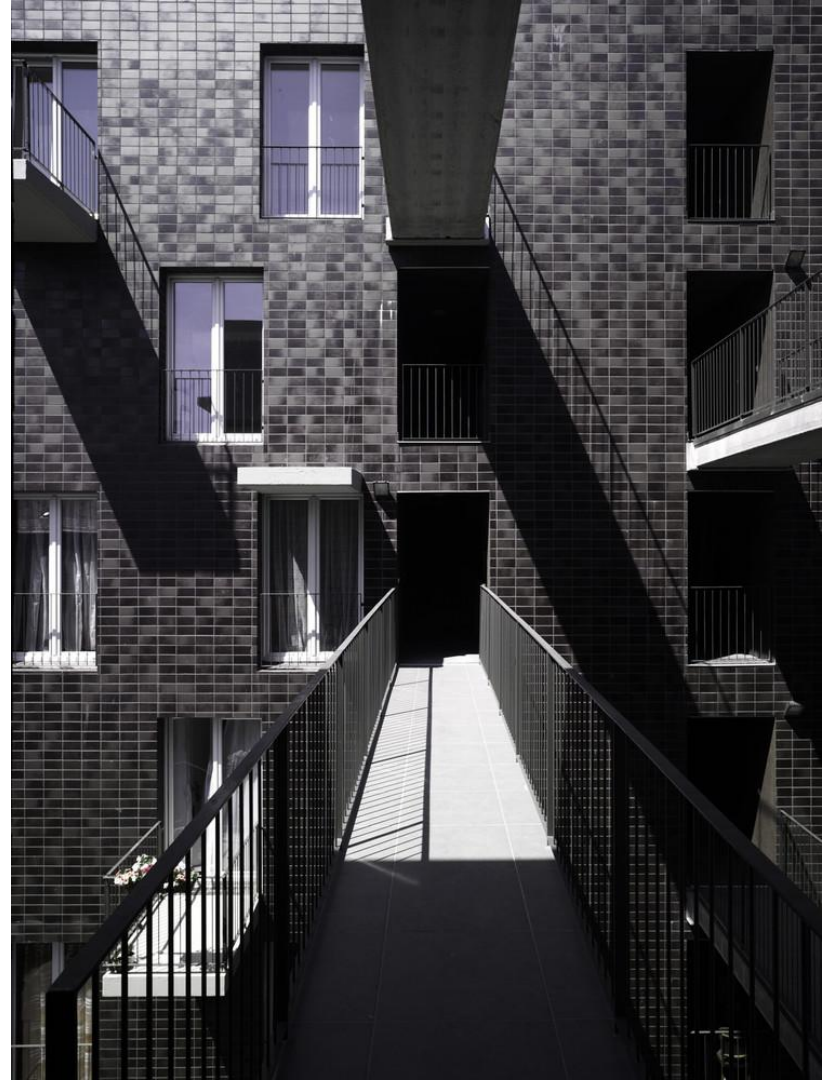
DISTRIBUTION



FIRST floor



THIRD floor



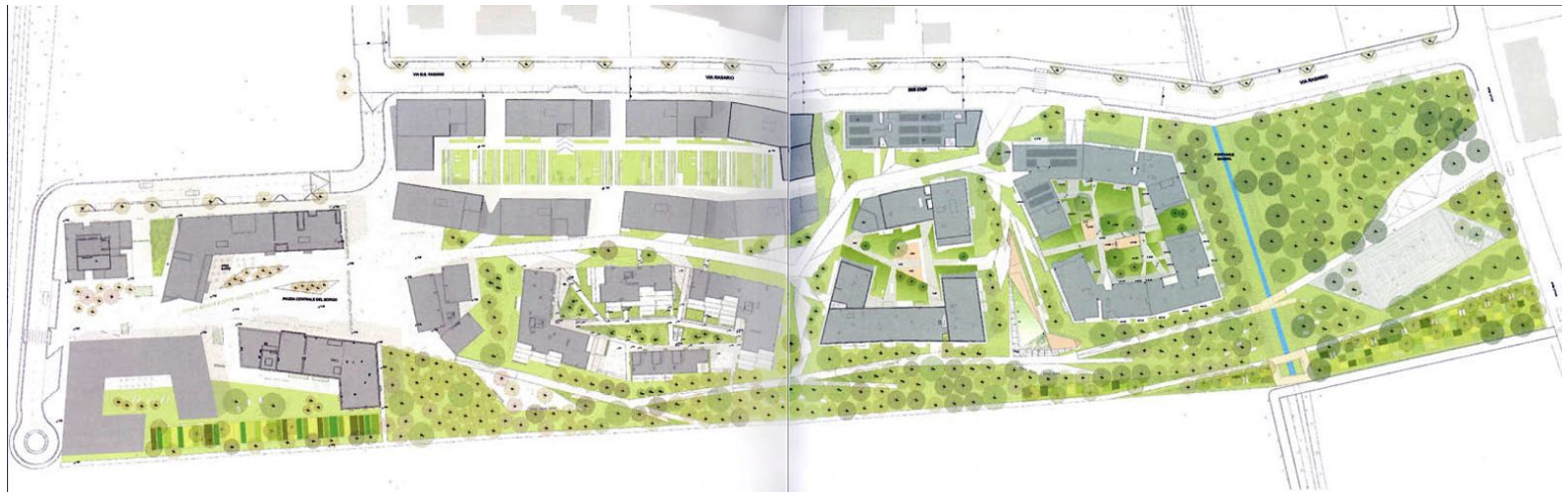
FLAT - MIX

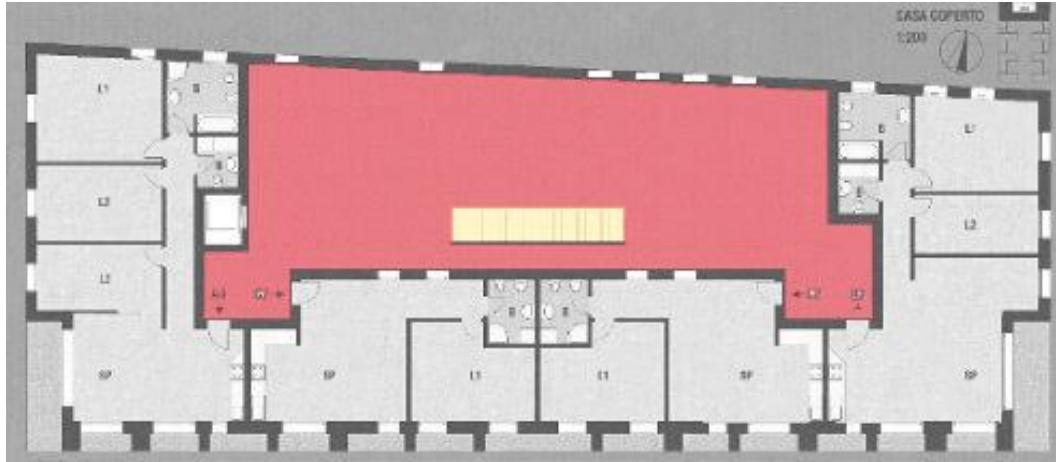


SOCIAL HOUSING IN FIGINO, MILAN / ITALY

ROBECCHI ARCHITECTURE STUDIO



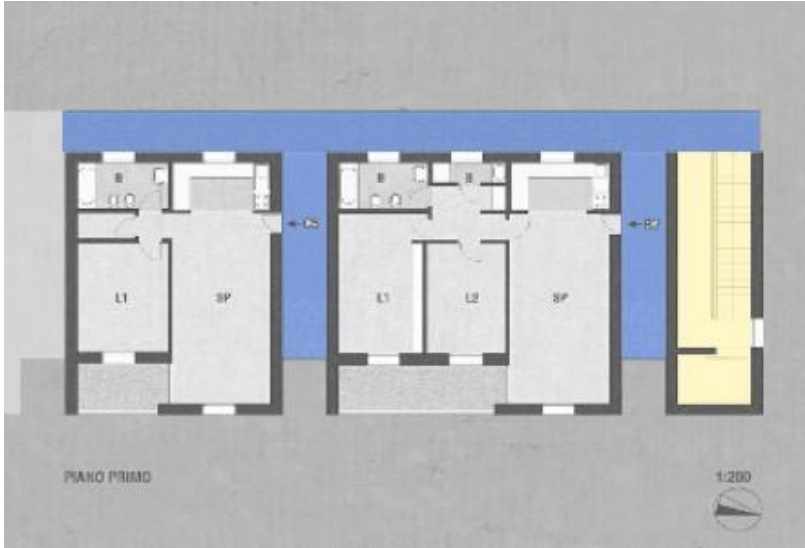




- Common spaces
- Vertical circulations
- Horizontal distribution



FLAT - MIX



FLAT - MIX

